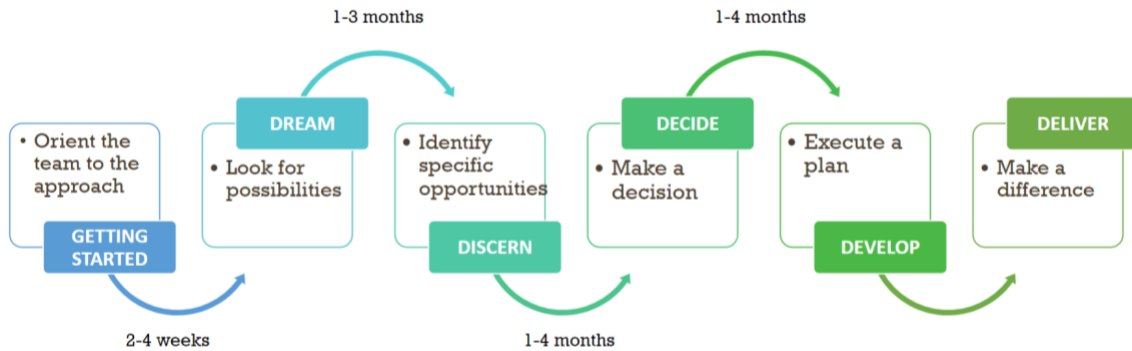


**Episcopal Diocese of San Diego
Mission Real Estate Development Process**



Phase	Estimated Time Required	Description
Getting Started	2-4 weeks	<ul style="list-style-type: none"> Initial meeting to understand the congregation's interests and need for support Getting started workshop, preliminary timeline, launch team staffing plan Diocese and church leaders have a shared understanding of a missional approach to real estate development
Dream	1-3 months	<ul style="list-style-type: none"> A congregation's leadership and membership explore their aspirations for mission stewardship of their real estate, as well as the concerns and hopes of the surrounding community. Gather data and stories through listening sessions, surveys, church records, demographic studies, information interviews,

Phase	Estimated Time Required	Description
		<p>and by being an active presence in the neighborhood activities.</p> <ul style="list-style-type: none"> The congregation has a list of both congregational and community priorities.
Discern	2-4 months	<ul style="list-style-type: none"> A congregation researches the ideas to identify those that are most feasible for the congregation. The congregation has narrowed their list to two or three potential uses of their available real estate.
Decide	2-4 months	<ul style="list-style-type: none"> A congregation develops their real estate project to completion in a manner that keeps the congregation and surrounding community informed and involved throughout. The congregation obtains contractor estimates and partnership commitments and makes a decision to go/no go on a particular project.
Develop	Varies by Project Type	<ul style="list-style-type: none"> A congregation develops their real estate project to completion in a manner that keeps the congregation and surrounding community informed and involved throughout. The congregation develops a project that aligns with congregational and community priorities and contributes to their shared well-being
Deliver	Varies by Project Type	<ul style="list-style-type: none"> A congregation regularly assesses the impact of its mission real estate investment and collaborates with partners to fulfill long-term vision. The congregation understands the impact of its project, its feasibility and what changes need to be adapted to keep it sustainable.



Find more mission real estate resources at edsd.org/missionrealestate. For those ready to take next steps, check out our growing library of mission real estate tools by scanning the QR code. Password: Mission